



---

## MB-20 Quick Guide

Configuration Overview .....	2 & 3
About, Tools, Safety .....	4
The MB-20 System .....	4
Basic Module .....	5
The Filter Stage .....	5
Combo Filter Trays .....	6
The Clamp-on Adapter .....	6
The Swing Away Module .....	7
Back 138mm Bellows Adapter .....	7
Console for Lightweight Support .....	8
Adapter for 19mm & 15mm Rods .....	8
Vertical & Horizontal Adjustment .....	9
Top & Side Flags .....	10
Sunshade .....	11
ARRI Group Addresses .....	12

# Configuration Overview

## Light Protection



**Top flag**, K2.47103.0  
**Bottom flag**, K2.47103.0  
**Side flag (pair)**, K2.65056.0



**Hard Matte Sets**  
**2/3" Video Format 4:3**  
 K2.47689.0  
**2/3" Video Format 16:9**  
 K2.47690.0  
**35mm Film**  
 K2.47691.0

## Carriers & Filter Stages

SET configurations:



**MB-20, SET for 235 side bracket**  
 for ARRI 235 side bracket with 19mm rods  
 K0.60023.0

**Set includes:**  
 K2.65027.0, K2.65032.0, K2.65026.0, K2.65024.0  
**Bellows, light protection and filter frames must be ordered separately**



**MB-20, SET for 15mm lightweight support**  
 for lightweight support LWS-3  
 K0.60022.0

**Set includes:**  
 K2.65027.0, K2.65032.0, K2.65028.0,  
 K2.65026.0, K2.65025.0  
**Bellows, light protection and filter frames must be ordered separately**



**MB-20, SET for 19mm support**  
 K0.60024.0

as K0.60022.0 but with adapter for 19mm studio rods  
**Set includes:** K2.65027.0, K2.65032.0, K2.65028.0,  
 K2.65026.0, K2.65025.0, **K2.47101.0**  
**Bellows, light protection and filter frames must be ordered separately**



**MB-20, SET for 15mm support**  
 K0.60025.0

as K0.60022.0 but with adapter for 15mm rods  
**Set includes:** K2.65027.0, K2.65032.0, K2.65028.0,  
 K2.65026.0, K2.65025.0, **K2.47102.0**  
**Bellows, light protection and filter frames must be ordered separately**

## Filter frames

**4" x 4" Filter frame**  
 K2.65098.0



**4" x 5.65" Filter frame horizontal**  
 K2.65048.0



**4" x 5.65" Filter frame vertical**  
 K2.65049.0



**Filter frame combo**  
 4" x 5.65" / 5x5  
 K2.65023.0  
 5.65" x 5.65" / 5x6  
 K2.65022.0



**Clamp-On adapter for direct clip-on use.**  
**requires adapter rings**  
 K2.65030.0



**Adapter Rings for Clamp-On adapter**  
 K2.47671.0 (ø 80mm)\*  
 \*for Video Lenses  
 K2.47672.0 (ø 80mm)-HS\*  
 \*for Zeiss Super Speed Lenses  
 K2.47673.0 (ø 85mm)  
 K2.47674.0 (ø 86mm)  
 K2.47675.0 (ø 87mm)\*  
 \*for Zeiss Vario Sonnar  
 K2.47676.0 (ø 90mm)  
 K2.47677.0 (ø 92mm)  
 K2.47678.0 (ø 95mm)\*  
 \*not for wide angle video zooms  
 K2.65031.0 (ø 95mm) WA\*  
 \*for 13x4.5mm Fujinon and 11x4.7mm Canon  
 K2.47679.0 (ø 96mm)  
 K2.47680.0 (ø 98mm)  
 K2.47681.0 (ø 100mm)  
 K2.47682.0 (ø 104mm)  
 K2.65097.0 (ø 105mm)  
 K2.47683.0 (ø 110mm)  
 K2.47684.0 (ø 114mm)  
 K2.47685.0 (ø 117mm)  
 K2.47686.0 (ø 120mm)  
 K2.47687.0 (ø 128mm)\*  
 \*not for Fujinon HAe3x5  
 K2.47688.0 (ø 128mm) WA\*  
 \*for Fujinon HAe3x5

## Basic Modules & Accessories



**MB-20 basic module with sun shade**  
 K2.65027.0



**2-filter stage**  
 K2.65026.0  
**3-filter stage**  
 K2.65089.0



**Back 138mm bellows adapter**  
 K2.65028.0



**Swing away module**  
 K2.65032.0



**Console for lightweight support**  
 K2.65025.0  
 (requires swingaway module)



**Clamp-On Adapter**  
 K2.65030.0  
 (instead of swing away module)

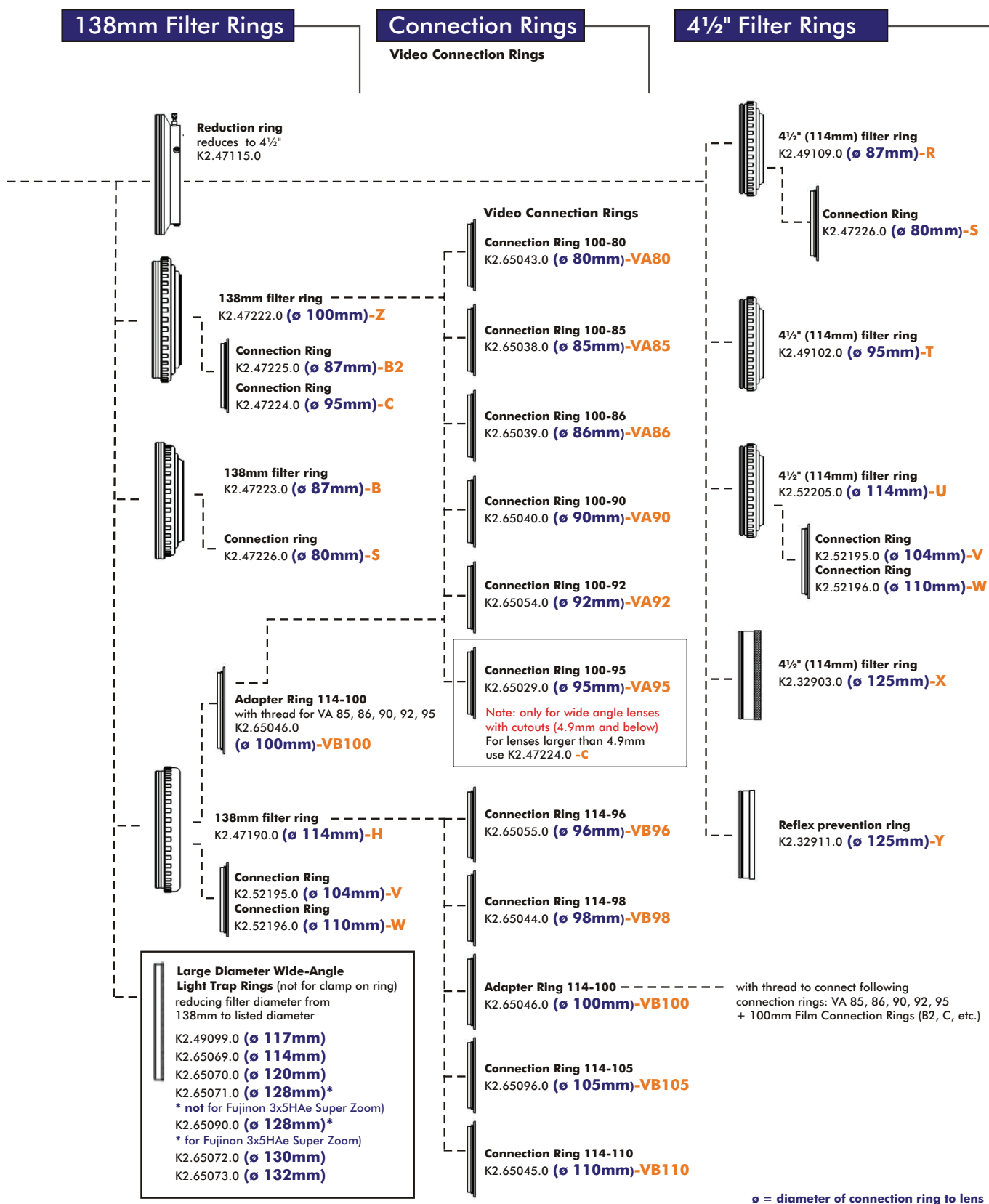


**Console for 235 side bracket**  
 K2.65024.0  
**Rod Reduction to 15mm**  
 K2.47062.0



**Adapter for 19mm Rods**  
 K2.47101.0  
**Adapter for 15mm Rods**  
 K2.47102.0

# Configuration Overview



# About, Tools, Safety, MB-20 System

---

## About this ARRI Quick Guide

This Quick Guide (order number K5.44285.0) provides a short introduction to the ARRI MB-20 Compact Matte Box. It is essential that you acquaint yourself with this guide before operating the equipment.

Even though all efforts have been made to ensure this guide's accuracy, changes and upgrades to the products described can result in different hardware or behaviour. Technical data are subject to change without notice.

This document can be downloaded from [www.arri.com](http://www.arri.com) in Acrobat pdf format. The Acrobat Reader can be downloaded free from the Adobe web site at [www.adobe.com](http://www.adobe.com). A PostScript printer gives best printing results.

## Tools

Anyone operating the ARRI MB-20 system should have a **3 mm metric hex wrench** which is used to fine tune the vertical orientation of the MB-20 with the Swing-away Module fitted.

## Safety Specifications

- Assembly and initial operation should be carried out only by persons who are familiar with the equipment.
- Repairs should be carried out only by authorised ARRI service centres.
- Use only original ARRI replacement parts and accessories!
- Do not remove any screws which are secured with paint.

## MB-20 System

The ARRI MB-20 Compact Matte Box is a versatile, modular matte box designed primarily for the high definition video market, but can equally well be used with 16 or 35 format film cameras. Interchangeable modules allow for either rod mounted, swing-away operation or for clamping directly onto the lens.

The heart of the matte box is the Basic Module, in front of which can be fitted the removable Sunshade and Top, Bottom and Side Flags. Interchangeable Hard Mattes can be snapped into the front of the Sunshade.

The back of the Basic Module accepts a 2 or 3 Filter Stage – all filters are individually rotatable.

The right-hand edge of the Basic Module mates with one of 2 support systems:

- Check recent price lists and Configuration Overviews for new parts not yet in the MB-20 program at the time of printing of this Quick Guide.

### The Clamp-on Adapter

In this mode the matte box clamps directly to the front of the lens. The Clamp-on Adapter used alone fits lenses with a front diameter of 130mm. A range of Adapter Rings reduces the basic 130mm diameter down to as little as 80mm to work with a wide variety of lenses.

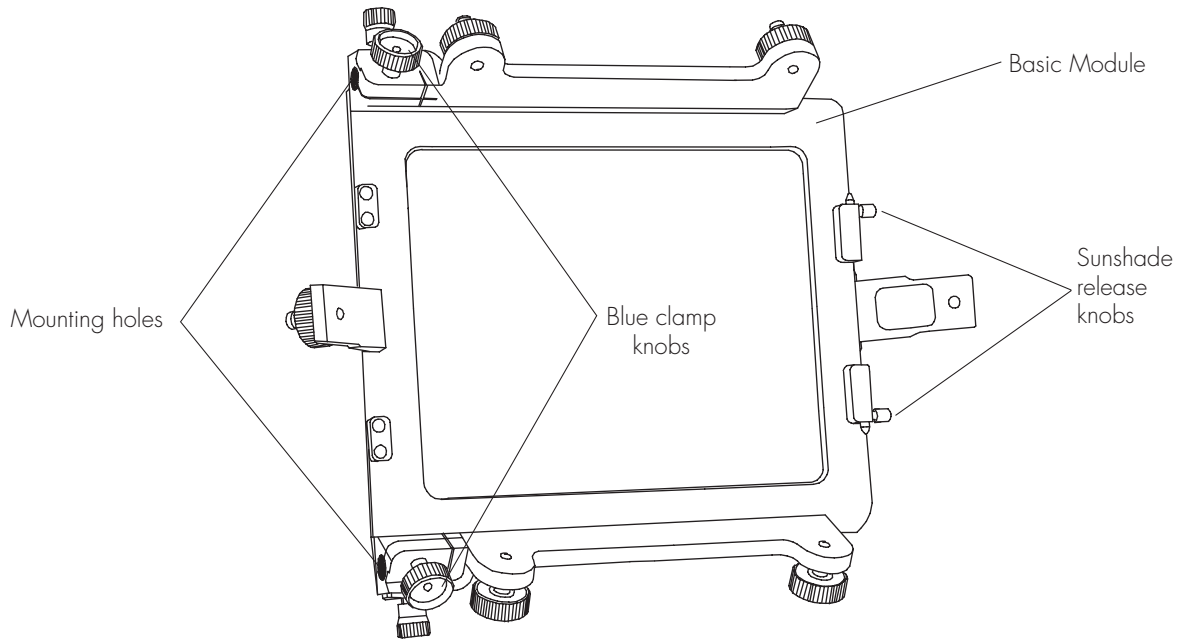
### The Swing Away Module

The Swing Away Module offers all the features of a production matte box, where the matte box is mounted on support rods and the entire front section swings forward to facilitate lens changes. To the Swing Away Module is fitted either the Console for Lightweight Support or the Console for 235 Side Bracket. The Console for Lightweight Support mounts directly on 15mm Lightweight Support Rods or, with the addition of an adapter, onto 15mm or 19mm studio support rods. The Console for 235 Side Bracket allows the matte box to be used with an ARRIFLEX 235 fitted with Side Bars.

In Swing Away mode the rear of the filter stage is fitted with the Back 138mm Bellows Adapter. This accepts a selection of 138mm and 4 ½" Filter Rings, which offers the addition of a further, round, rotatable filter. The filter rings combine with Connection or Adapter Rings to work with lenses of different front diameters. (See the Configuration Overview on pages 2 & 3 of this guide for details).

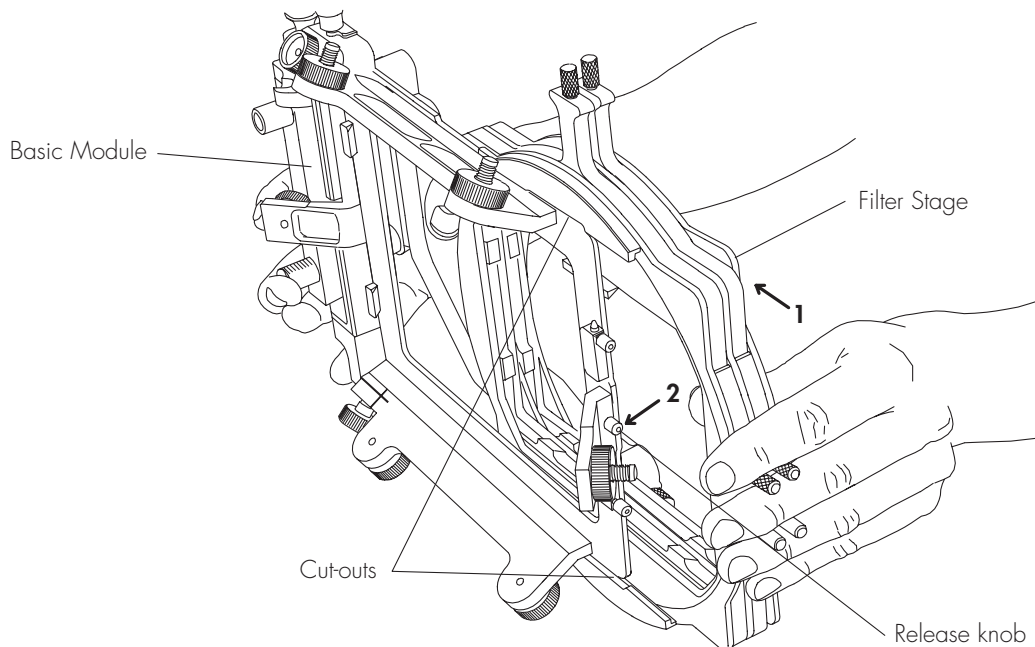
# Basic Operation

## The Basic Module



The Basic Module is the core plate of the Matte Box in front of which the sunshade and flags are mounted. Behind it is fitted either a two or three stage filter holder. One edge has two mounting holes which allow either the Clamp-on Adapter or Swing Away Module to be fitted.

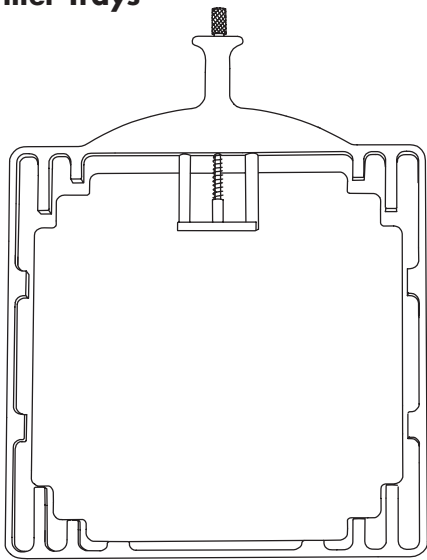
## The Filter Stage



Fit the cut-outs on the front of the Filter Stage over the corresponding tabs on the back of the Basic Module in the position shown, and then slide it into the central position until it locks in place (1). To remove it again, pull the filter release lever forward (2) and reverse the procedure.

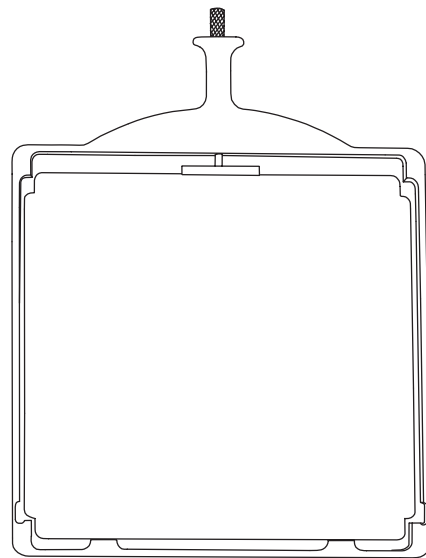
# Basic Operation

## Combo Filter Trays



Combo 1

Holds 4" x 5.65" filters horizontally or vertically or 5" x 5" square filters.

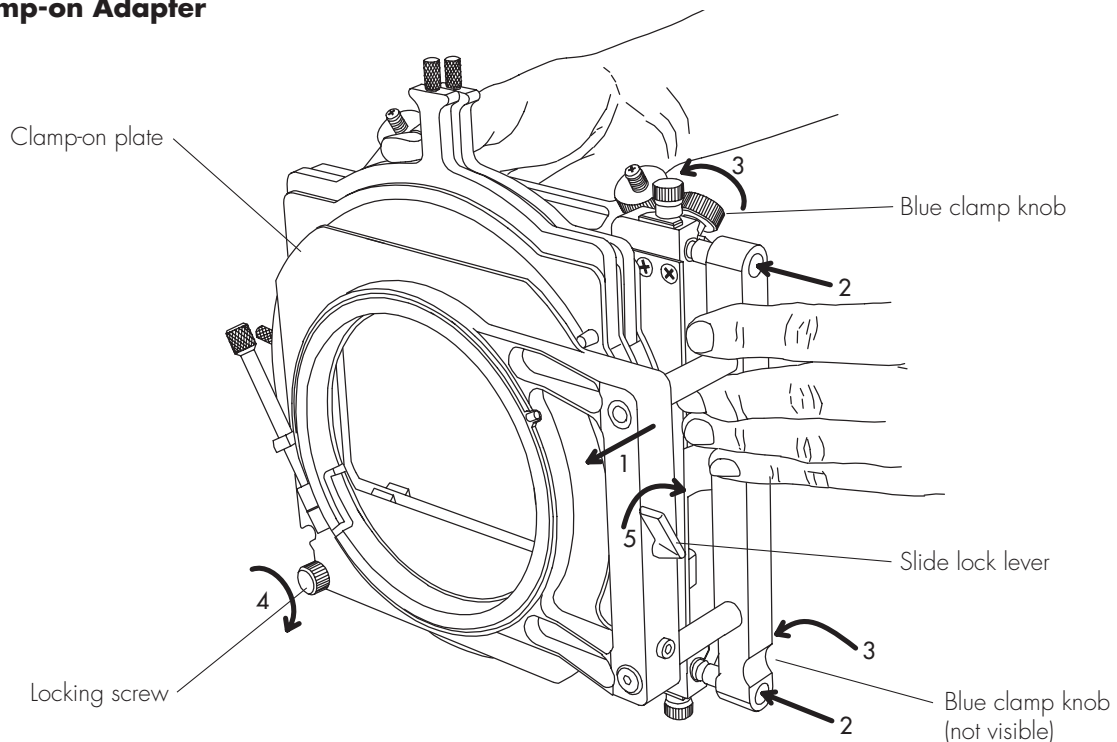


Combo 2

Holds 5.65" x 5.65" square filters or 5" x 6" filters.

In addition to conventional 4" x 5.65" filter trays in both horizontal and vertical orientation, the MB-20 offers two Combo Filter Trays. These are designed so filters of more than one size and shape can be used.

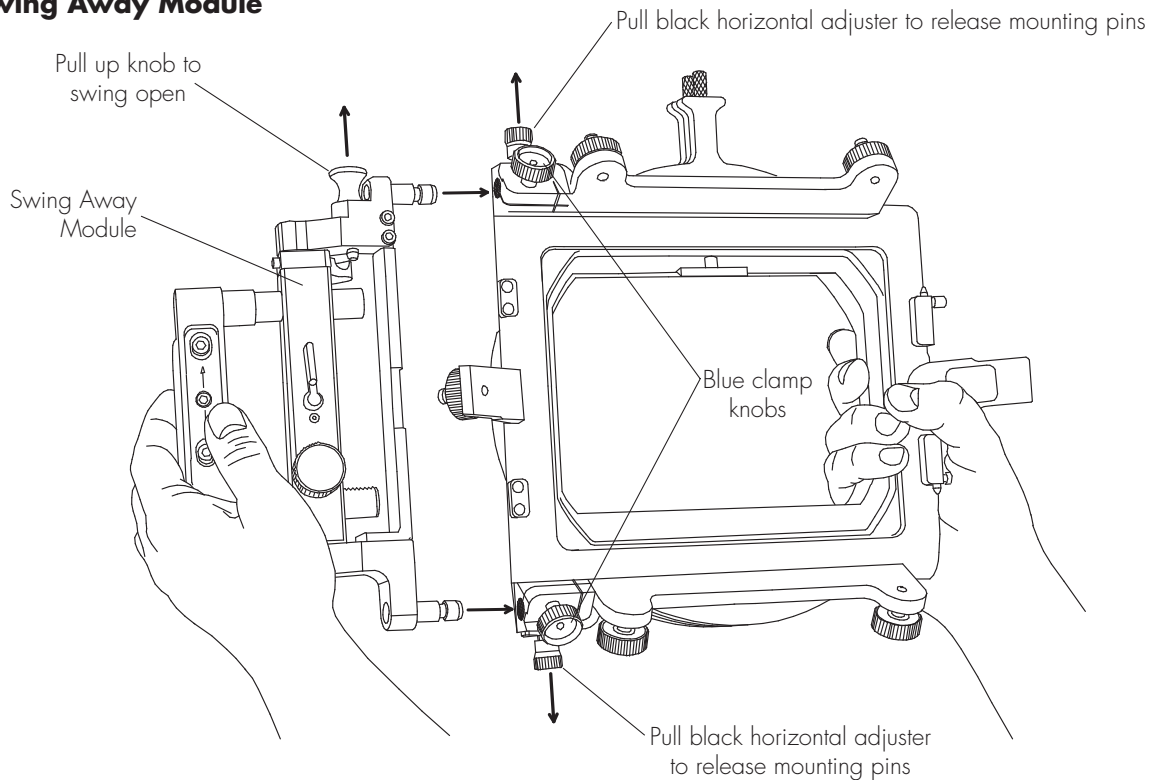
## The Clamp-on Adapter



To fit the Clamp-on Adapter to the Basic Module, ensure the slide lock lever is unlocked, and slide the Clamp-on plate back fully on the rods (1). Engage the two mounting pins into the holes on the Basic Module. Press fully home (2) and tighten the two blue clamp knobs (3). Now slide the Clamp-on Plate forward and secure it to the back of the filter stage with the locking screw (4). Finally tighten the slide lock lever (5).

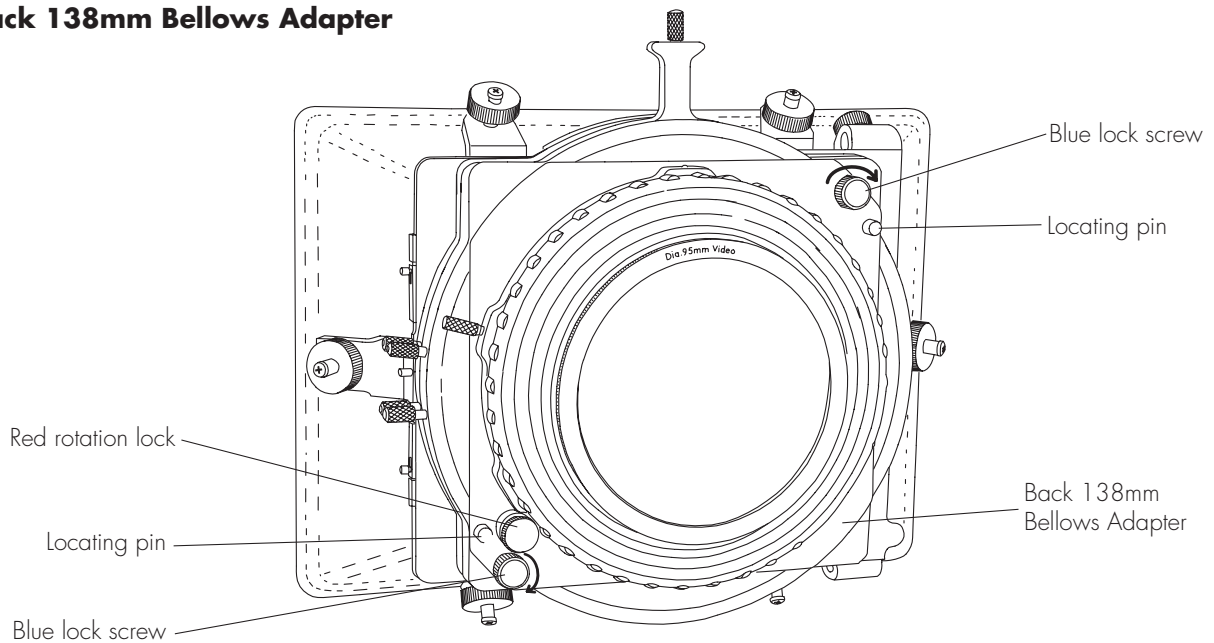
# Basic Operation

## The Swing Away Module



Engage the two mounting pins of the Swing Away Module into the corresponding holes in the Basic Module, press fully home and tighten the two blue clamp knobs. To remove the Swing Away Module, loosen the blue clamp knobs and it is then necessary to pull the black horizontal adjuster out of engagement with the mounting pins before they can be withdrawn from the Basic Module.

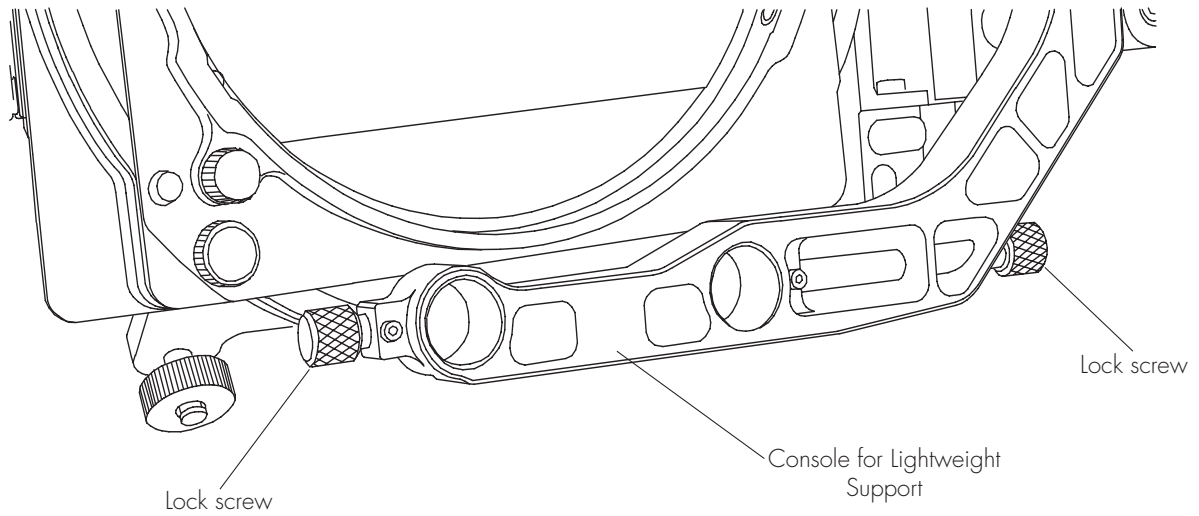
## Back 138mm Bellows Adapter



Fit the Back 138mm Bellows Adapter over the two locating pins and secure with the two blue lock screws. The red rotation lock either releases or locks the rotation of the complete bellows adapter along with any filter mounted in the bellows filter holder.

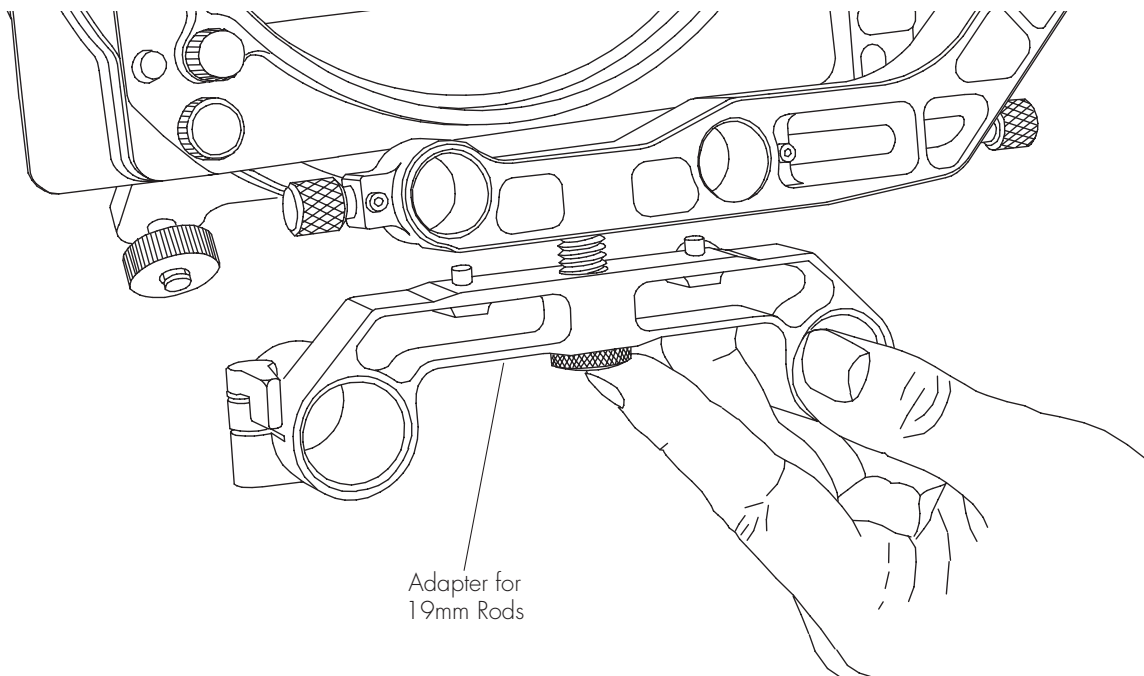
# Basic Operation

## Console for Lightweight Support



The Console for Lightweight Support attaches to the Swing Away Module and allows the matte box to be mounted on 15mm lightweight support rods. When the correct distance from the camera has been set tighten the lock screws to lock the console to the rods.

## Adapter for 19mm or 15mm Rods

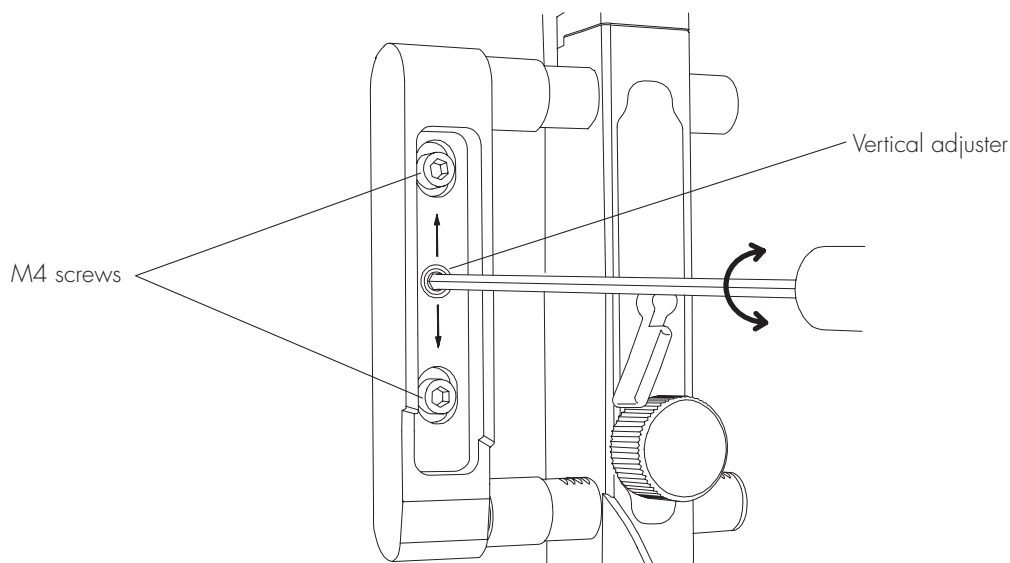


To use the MB-20 with a bridge plate and either 19mm or 15mm heavy duty support rods, an adapter needs to be fitted to the bottom of the Console for Lightweight Support as shown above.



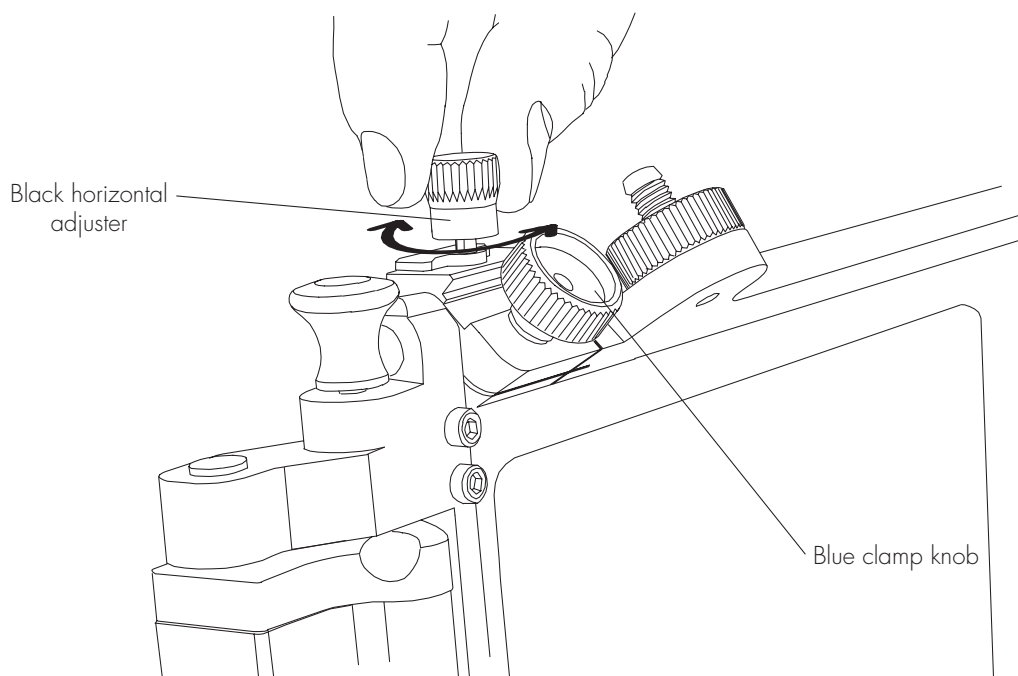
# Basic Operation

## Vertical Adjustment



The Swing-away Module is attached to either the Console for Lightweight Support or the Console for 235 Side Bracket by two M4 screws. Between these is an adjuster for the vertical alignment of the matte box. To operate this adjuster, use a 3mm hex wrench to loosen the two M4 screws slightly before using it to rotate the adjuster. Once the desired alignment is achieved, tighten the two M4 screws.

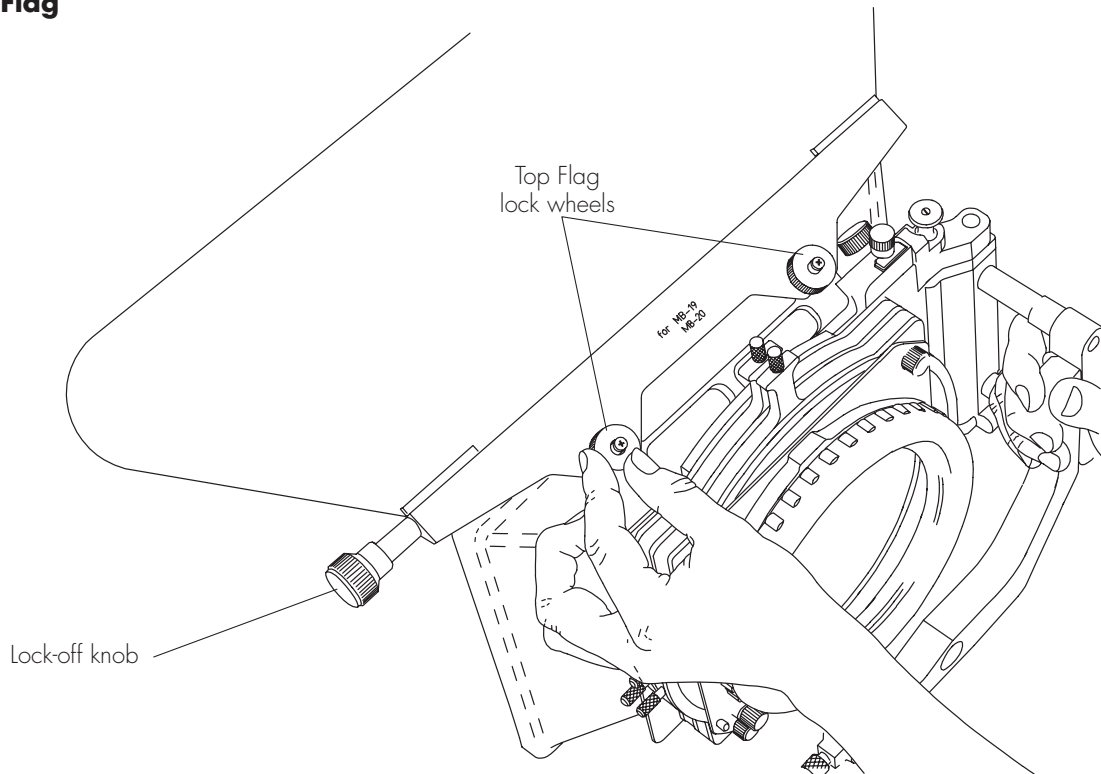
## Horizontal Adjustment



Before tightening the blue clamp knobs, the horizontal position of the matte box can be fine tuned by rotating the two black horizontal adjusters (top one only shown). Once the desired alignment is achieved, lock the two blue clamp knobs.

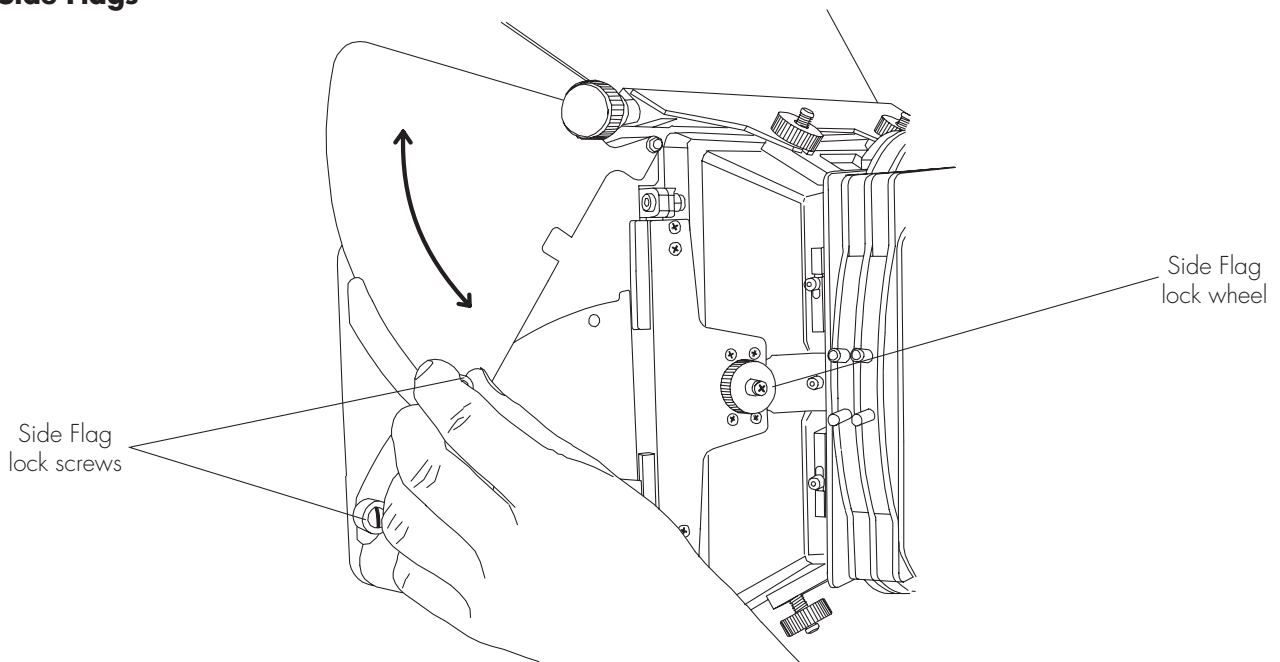
# Basic Operation

## Top Flag



The Top Flag is held onto the Basic Module by two lock wheels, as shown above. It can be adjusted and fixed in position by tightening the lock-off knob at one end. If desired, the Top Flag can be attached underneath the matte box to form a bottom flag.

## Side Flags

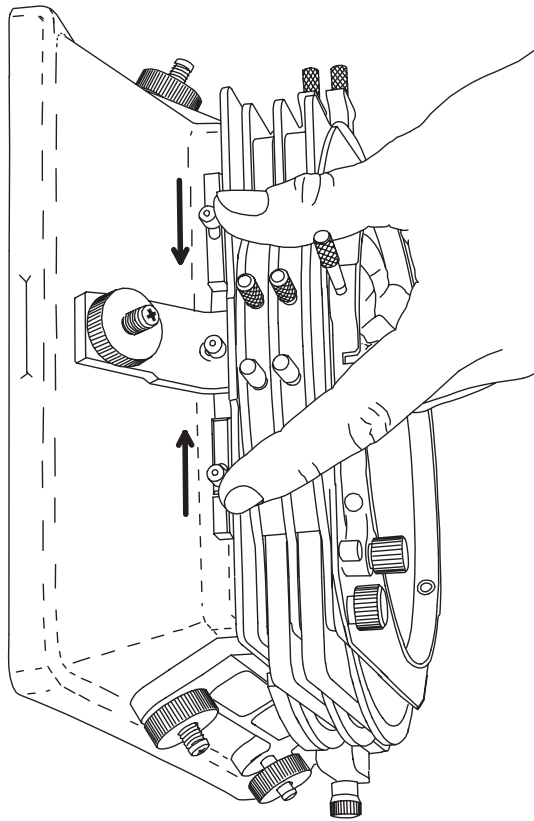


The two side flags are identical. They attach to a single lug on either side of the Basic Module. The top and bottom edges are adjustable.

## Basic Operation

---

### Removing the Sunshade



The Sunshade is quickly removed by squeezing together the two release buttons, as shown above. The opposite side of the sunshade is held in place by two metal lugs. When re-fitting the Sunshade, these must be engaged first.

# ARRI Group Addresses

---

- Australia**      **ARRI Australia PTY Limited (Sales, Service & Rental)**  
Unit 6C, 5 Talavera Road, Macquarie Park, Sydney. NSW 2113, Australia  
Voice phone: +61 (2) 9855 4300, FAX: +61 (2) 9855 4301  
Email: info@arri.com.au
- Canada**      **ARRI Canada Limited (Sales & Service)**  
415 Horner Ave. Unit 11, Toronto, Ontario M8W 4W3, Canada  
Voice phone: +416 255 3335, FAX: +416 255 3399  
Email: email@arrican.com
- Germany**      **Arnold & Richter Cine Technik (Sales & Service)**  
Türkenstraße 89, D-80799 Munich, Germany  
Voice phone: +49 (0)89 3809-0, FAX: +49 (0)89 3809-1244  
Email: webmaster@arri.de
- ARRI Camera Rental (Film Equipment Rental)**  
Türkenstraße 89, D-80799 Munich, Germany  
Voice phone: +49 (0)89 3809-1240, FAX: +49 (0)89 3809-1798  
Email: mjahn@arri.de
- Great Britain**      **ARRI GB Limited (Sales & Service)**  
2 Highbridge, Oxford Road, Uxbridge, Middlesex, UB8 1LX, England  
Voice phone: +44 (0)1895 457 000, FAX: +44 (0)1895 457 001  
Email: sales@arri-gb.com
- ARRI MEDIA (Film Equipment Rental)**  
3 Highbridge, Oxford Road, Uxbridge, Middlesex, UB8 1LX, England  
Voice phone: +44 (0)1895 457 100, FAX: +44 (0)1895 457 101  
Email: info@arrimedia.com
- ARRI Lighting Rental (Lighting Rental)**  
4 Highbridge, Oxford Road, Uxbridge, Middlesex, UB8 1LX, England  
Voice phone: +44 (0)1895 457 200, FAX: +44 (0)1895 457 201  
Email: tmoran@arrirental.com
- Italy**      **ARRI Italia S.r.l. (Head Office, Milan)**  
Viale Edison 318, 20099 Sesto San Giovanni (Milan), Italy  
Voice phone: +39 (0)2 262 271 75, FAX: +39 (0)2 242 1692  
Email: info@arri.it
- ARRI Italia S.r.l. (Sales & Service, Rome)**  
Via Placanicca 95, 00040 Morena (Rome), Italy  
Voice phone: +39 (0)6 726 707 97, FAX: +39 (0)6 723 1541  
E-mail: catalano@arri.it
- USA**      **ARRI Inc. (Sales & Service, East Coast)**  
617 Route 303, Blauvelt, NY 10913-1123, USA  
Voice phone: +1 914 353 1400, FAX: +1 914 425 1250  
Email: arriflex@arri.com
- ARRI Inc. (Sales & Service, West Coast)**  
600 North Victory Blvd., Burbank, CA 91502-1639, USA  
Voice phone: +1 818 841 7070, FAX: +1 818 848 4028  
Email: brussell@arri.com
- ARRI CSC (Film Equipment Rental, NY)**  
619 West 54th St, New York, NY 10019, USA  
Voice phone: +1 212 757 0906, FAX: +1 212 713 0075  
Email: ctamarro@cameraservice.com
- ARRI CSC (Film Equipment Rental, Florida)**  
2385 Stirling Road, Fort Lauderdale, FL 33312, USA  
Voice phone: +1 954 322 4545, FAX: +1 954 322 4188  
Email: estamm@cameraservice.com
- World Wide Web**      **www.arri.com**